

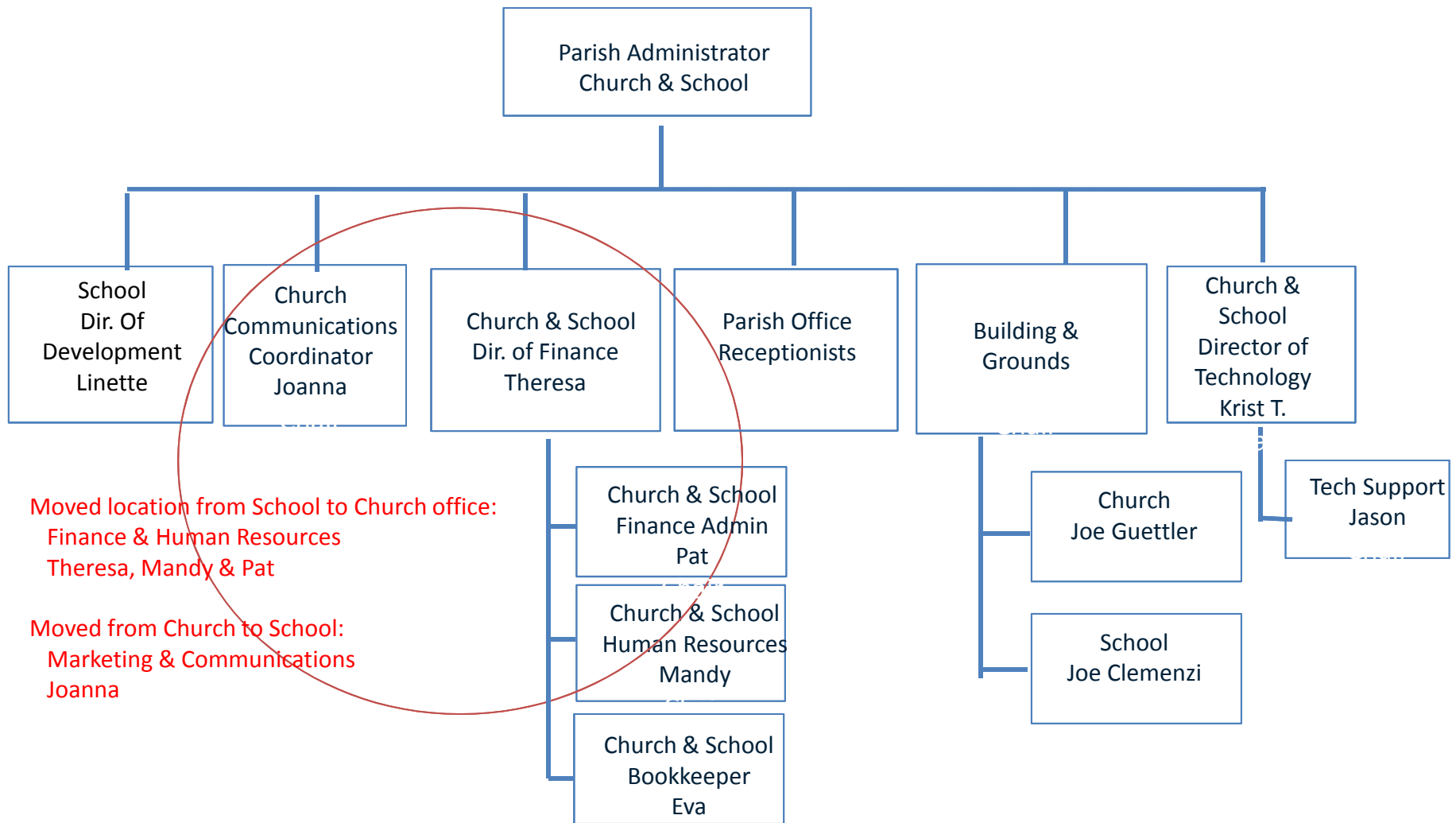
Saint Anastasia School Committee Structure Overview

September 20, 2016
Father Rick George

Agenda

- Summer 2016 organizational changes & office moves
- Prior Year Committee Structure
- New Committee Structure
- Committee Overview- purpose & members
- SAC committee structure

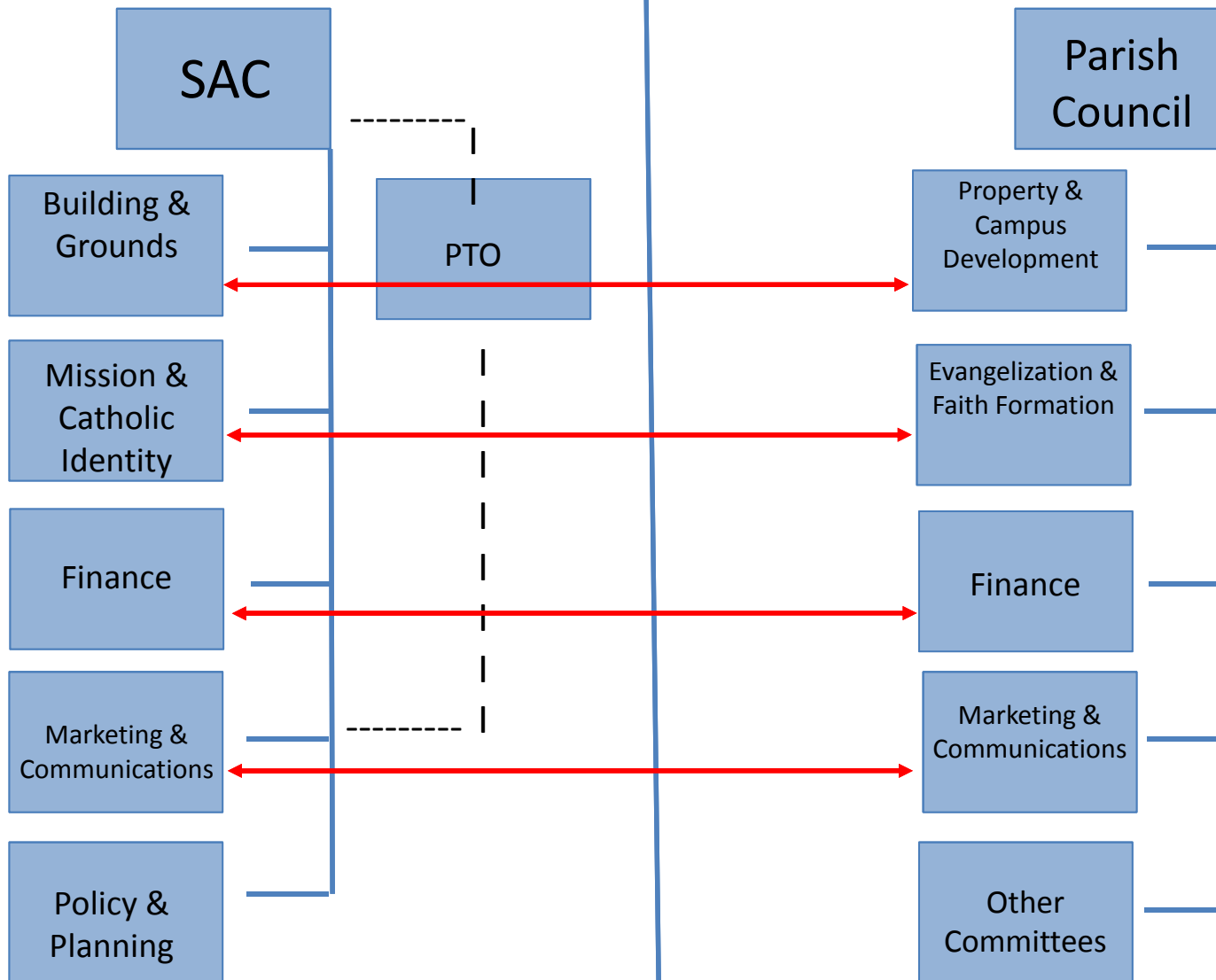
Church & School Staff Changes



Committee Structure As of Today

School

Church



Three Committee Structures

1. No Change

Goals, objectives stay as is to focus on either Church or School



2. Overlap

Cross membership between Church & School.



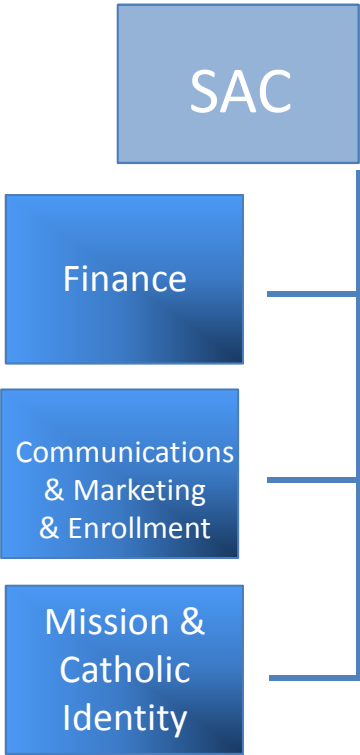
3. Combinations

Combine two similar committees into one.



Proposed Committee Structure Phase 1

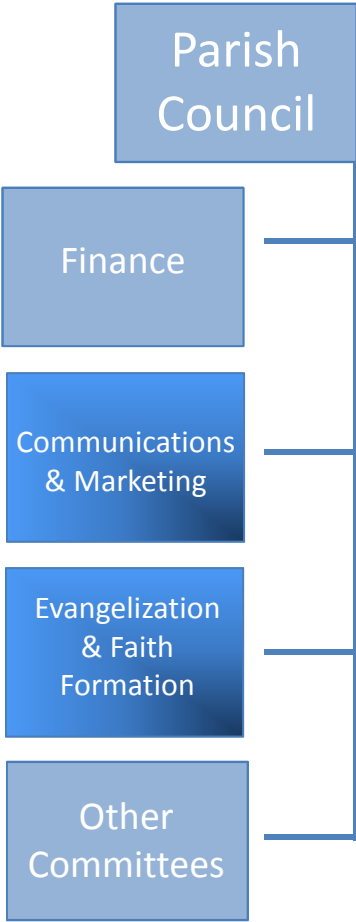
School



Combined



Church



School Finance Committee

*(overlap)

Purpose

- To monitor current year budget & to develop & propose to the SAC a budget for next fiscal year.
- Prepare, update & monitor long-range financial plans for the school;
- To oversee, from a policy & planning perspective, business operations of the school.

Members:

Mourice Levesque (Chair)

Theresa Rondeau (Admin Resource 1)

Jean Wroblewski (Parish Administrator)*

Keith Hartley

Judith Newell

Jennifer Brancaccio

Mike Cason

Adam Bookspan

Church Finance Committee

Purpose

- A consultative body providing advice & recommendations to the Pastor concerning the Stewardship of the parish's fiscal and temporal resources.
- Long range financial planning to support the mission of the parish.

Members:

Father George (Pastor)

Jean Wroblewski (Parish Administrator)

Rita Stikelether(Chair)

Eva Cruz (Admin Resource 1)

Karen Hogan

Frank Lynch

School Marketing, Communications & Enrollment Committee

*(overlap)

Purpose

- To assist the Principal, School SAC with planning, creating, implementing and monitoring a program to market School image and enrollment.
- To assist the Principal, School SAC & Pastor in developing a communication plan to promote the School.

Members

Open (Chair)

Linette Trubulsky (Admin Resource)

Jean Wroblewski (Parish Administrator)*

Joanna Marazzi (Church) *

Courtney Purnell

Erin Casson

Church Marketing & Communications Committee

*(overlap)

Purpose

- To advise and actively assist our parish and Communications Coordinator with ways of promoting church events.
- To advise and actively assist with building awareness of St. Anastasia Church within our community.

Members

Joanna Marazzi (Chair/Admin Resource)

Jean Wroblewski (Parish Administrator)*

Linette Trubulsky (School)*

Ann Rise

Jennifer Trefelner

Melanie Wiles

School Mission & Catholic Identity Committee

*(overlap)

Purpose

- To formulate & propose to the SAC, policies & plans which will ensure that the school maintains & enhances its identity as Catholic and carries out its mission
- To work with **Church & School** staff on programs designed to publicly enhance the Catholic character and identity of the school.

Members

Father George (Pastor)*

Denise O'Loughlin (Chair)

Darlene Francis (Admin Resource - Church)*

Sara Fitzgerald

Karen Richmond

Danielle Steele

Janice Lynch

Asvaldo Parrotta

Church Evangelization & Faith Formation Committee

*(overlap)

Purpose

- Lead people through the process of discovering/rediscovers the beauty of the Christian faith.
- Share our faith and invite others & find ways for parishioners to encounter Christ.

Members

Father George (Pastor)

Jean Wroblewski (Parish Administrator)*

Janet Dimitroff (Chair)

Marie Kerr

Sue Kuyawa

Maris Morales (JD)

Policy & Planning Committee (new combination)

Purpose

- To assist the **Church & School** in the formulation of a long-range strategic plan;
- To monitor the Strategic Plan & review the objectives for possible policy;
- To assist the administration in the formulation of policy to guide academic, student, business, development & faith community affairs.

Key Responsibilities

- Assist in the establishment of long range strategic goals for **Church & School**.
- Monitor progress of the strategic plans for **Church & School**.

Members: **Pastor, Parish Administrator (Church/School) & Principal**

Church & School Building & Grounds Committee (new combination)

Purpose

- To develop and monitor long-term facility maintenance, capital improvements, space utilization plans for the **Church & School**.
- Assess the needs of buildings and grounds of St. Anastasia **Church & School**, prioritize projects and make necessary recommendations.

Roger Priest (Chair)

Joe Clemenzi

John Langel

Karl Guettler

Frank Guettler

Dennis Murphy

Pat Langel

Joe Guettler

Justin Price

Chris Richmond

Steve Ring

Ex-Officio Members

Father George (Pastor)

Jean Wroblewski (Parish Admin)

Dr. Kevin Hoeffner (Principal)

Safety & Security Ad Hoc Committee (new combination)

Purpose

- To protect and enhance the safety & security of all employees, parents, students, parishioners of the entire St. Anastasia campus including School & Church.
- To increase and enhance health safety.

Members

Mark Woodruff (Chair)
Denise O'Loughlin
Darlene Francis
James Gagliano

Ex Officio Members

Father George (Pastor)
Jean Wroblewski (Parish Administrator)
Kevin Hoeffner (Principal)
Scott Movic (Diocese)

School Advisory Committee Structure

Purpose

- SAC is to assist the principal in the governance of St. Anastasia School. Nature is advisory to the Pastor & Principal
- Strategic Planning, assist in creating goals & mission, policy formation, evaluation of policies, plans, mission effectiveness, financial planning & management, long range, institutional advancement/development & communication & mission effectiveness.

Members

Allen Osteen, Chair
Patty Gagliano, Vice Chair
Judith Newall, Secretary
Adam Bookspan
Amber Rankin
Stephen Neill
Joey Trefelner
John Perrone
Susan O'Conner

Committee Member Chairs

Mourice Levesque (Finance)
Denise O'Loughlin (Mission & Catholic)
Roger Priest (Building & Grounds)
Jean Wroblewski (Policy & Planning)

Ex Officio Members

Father George (Pastor)
Dr. Kevin Hoeffner (Principal)
Ben Hopper (JCHS Principal)
Linette Trabulsy (Development Director)
Karen Richmond (Assistant Principal)
Denise O'Loughlin (Assistant Principal)
Keri Hughes (PTO)

Blue: Executive Committee Members